

Project Update

Ryde Hospital Redevelopment

December 2024



Looking back on the year that was

A thank you message from Marcus Haines Project Director, Health Infrastructure



This year has been marked by growth, collaboration and remarkable progress on the \$526.8 million redevelopment of Ryde Hospital.

The redevelopment will replace the ageing infrastructure and expand the clinical services to support the growing population in the Ryde Hospital catchment.

In partnership with the Northern Sydney Local Health District (NSLHD), Health Infrastructure is leading this transformational redevelopment to enhance healthcare services for the community. The year's successes would not have been possible without the strength, resilience and commitment of our project team, hospital staff, community and consumers.

Navigating the complexities of construction in an operational hospital is no small feat. Project planning required innovative thinking, close collaboration and

a project team culture grounded in respect and open dialogue. By working together and valuing diverse perspectives, we overcame these challenges and achieved stronger outcomes that will benefit the entire community.

A major highlight has been the positive reception and active engagement from staff, patients, carers and the broader community. At every stage of the design and planning process, your voices have helped bring to life a hospital that will transform healthcare services for the area. As we progress construction with our contractor, A W Edwards, this collaborative spirit will remain at the heart of everything we do.

With the holiday season upon us, I want to take this opportunity to thank everyone who has contributed to the redevelopment of Ryde Hospital. Your support and dedication have left an indelible mark on this project. I wish you all a safe and joyful holiday season and look forward to another year of shared achievements as we continue on this exciting journey together in 2025.

Reflecting on partnerships and achievements in 2024

Hospital and community partnerships are crucial to building a place of health. These partnerships go beyond the work of architects, engineers and construction crews, also drawing on the expertise of healthcare professionals, planners and community advocates to deliver holistic outcomes.

Our collaborative approach with NSLHD, which serves a population of nearly 970,000 people and a workforce of over 11,000 skilled professionals, has been instrumental to our success so far.

Here are some achievements from 2024, shared from our community:

In 2022 the redevelopment's Consumer Reference Group was started to help guide the planning and design through the eye of a user and the community. On top of monthly meetings, we have held site visits and community feedback sessions to help inform the planning and design for the new facility. Throughout 2024, their dedication continued to shape a patient-centred and inclusive future for Ryde Hospital and will continue as we progress through construction.

“The community’s commitment and shared vision have been key to delivering a holistic outcome, with the interim structures ensuring continued access to a high standard of healthcare throughout construction.”

– Warren Smith, Consumer Reference Group member, during a site tour.



Representatives from the Ryde Hospital Redevelopment Consumer Reference Group attending a site tour in October 2024.

In August 2024, a traditional sod-turning ceremony was held to mark the start of major construction works.

First Nations representatives conducted a smoking ceremony, burning native plants to cleanse the site, creating a positive environment for the future hospital and the visitors it will serve.

“The sod-turning ceremony marked a cultural acknowledgment and a significant milestone for the staff and community of Ryde.”

– Allana Thompson, A/Redevelopment Manager, Ryde Hospital



Dennis Duncan and Tu Wai Macdonald conducting a traditional smoking ceremony at the sod-turning event.



Premier Chris Minns and Minister for Health, Ryan Park joining members from Northern Sydney Local Health District, A W Edwards and Health Infrastructure to turn the first sod for the redevelopment.



Art workshop session with staff, project members and community members in May 2024.



In May and June 2024, community members and staff celebrated Ryde Hospital's 90th anniversary through interactive collage workshops. The collages created will inspire a series of artworks to be displayed in the new hospital, capturing the lived experiences and memories of members of the Ryde community.

“The Ryde Hospital Community Collage Project allowed participants to creatively reflect on their own personal connections to the hospital, celebrating community spirit and honouring the hospital’s legacy. This co-design process highlights the positive impact of arts in healthcare. A big thank you to everyone who joined us.”

– Marika Perrow, Creative Producer, Health Infrastructure



Celebrating 2024 with the Ryde Community

On Thursday 12 December, hospital staff, volunteers and members of the project team came together for an end of year BBQ to share some treats, reflect on the year that was and enjoy each other’s company.

2024 has been an enormous year for our health workforce and volunteers, and this gathering was a wonderful way to celebrate their incredible efforts and offer our thanks.

Thank you to our main works contractor A W Edwards who contributed the food and preparation for the event.

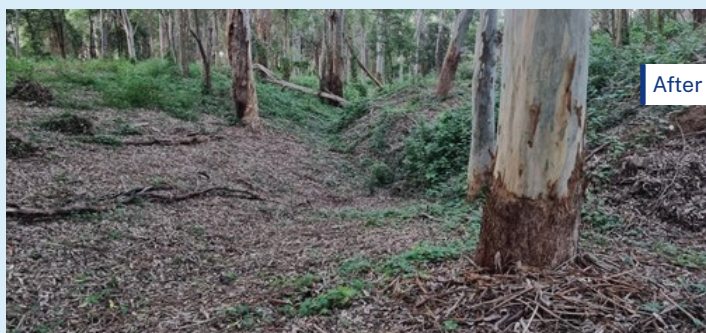
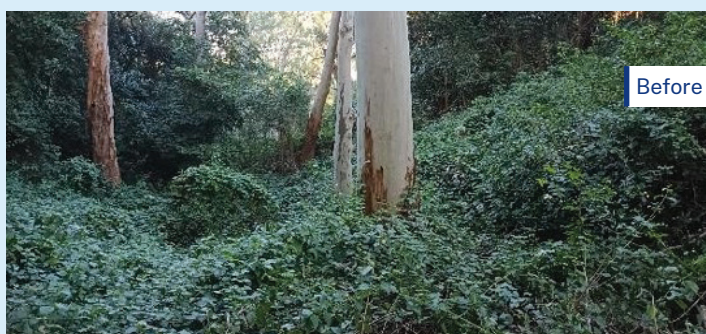
A key achievement in 2024 was the refurbishment of Ward 6 in Trigg House; transforming the space into a surgical ward while construction progresses for the Acute Services Building. Ward 3 relocated to the newly refurbished interim Trigg House in late November, marking a significant step forward for the project.

“The seamless move from Ward 3 to the new Ward 6 was made possible by the incredible cooperation of the hospital staff. Everyone is excited to start working in the new, purpose-built space – thank you to all who were involved!”

– Linta Manuvel, Clinical Nurse Educator, Ward 6, Ryde Hospital



Hospital staff celebrating the move to Trigg House.



The team has been working in the Blue Gum High Forest to remove invasive weeds and revegetate the area. Our aim is to create an Asset Protection Zone around the hospital to reduce fire risks and help preserve the forest’s natural ecosystem. This includes replanting native species, which will be supported by our seedling initiative launching in 2025. Stay tuned!

“So far, the restoration works has involved the clearing of invasive weeds and allowing natural regeneration to begin the process of return to the native ecosystem. This has exceeded our expectations, and we look forward to more progress in 2025.”

– David Thomas, Ryde Hospital volunteer

To help facilitate the redevelopment, the Ryde Hospital Health Information Services (HIS) team started to prepare for its relocation to Macquarie Hospital’s Building 6 in December 2023. The move took place on Tuesday 18 June 2024 and has enabled the team to streamline existing workflows, whilst maintaining and operating as a functional business unit.

“We’ve settled well into our temporary home and are grateful to all who helped to support the move.”

– Sally McIntosh, District HIS Manager



HIS staff celebrating the successful relocation to Macquarie Hospital.



Staging works to free up the footprint of the new hospital building, including interim facilities, was a focus in 2024. The interim Intensive Care Unit/Critical Care Unit (ICU/CCU) is a crucial step forward for the project, with the facility allowing patients to continue to receive high-quality care. The interim facilities are expected to be completed in early-2025.

“Being involved in the design and delivery of the new interim ICU/CCU has been an exciting journey. I look forward to its completion, supporting the redevelopment and delivering clinical care in the new facility.”

– Ros Blewitt, Clinical Nurse Consultant, Intensive Care Department, Ryde Hospital

Ryde Hospital Redevelopment site progress



Ryde Hospital in 2024, showcasing the construction achievements with highlighted areas of the newly constructed and refurbished areas and Blue Gum High Forest restoration works.



Exciting things still to come in 2025

As we wrap up the year, we would like to thank you for your support and enthusiasm throughout 2024.

Wishing you a joyful holiday and a happy and healthy year to come.

Stay tuned for updates and opportunities to get involved in 2025!



Scan the QR code to sign up to our project updates



Access changes

From Friday 20 January, the path through the Blue Gum High Forest will no longer provide access to the hospital. Signage will be in place to guide alternative access for pedestrians, with more details to follow in early 2025.



Holiday period shutdown

Following a busy year of construction, our project site will close for the holiday period.

The site will be closed from **6pm on Friday 20 December 2024** and will reopen from **7am on Monday 6 January 2025**.

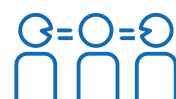
During this time the project inbox and phone will not be monitored.

For more information

T: 02 9978 5411

E: HI-RydeHospital-Redev@health.nsw.gov.au

W: rydehospitalredevelopment.health.nsw.gov.au



For an interpreter, call **131 450** and ask them to call **02 9978 5411**