



RYDE HOSPITAL REDEVELOPMENT CONSUMER REFERENCE GROUP MEMBERS ON A SITE VISIT WITH THE INTEGRATED PROJECT TEAM, 16 OCTOBER 2024

## Ryde Hospital Redevelopment welcomes consumer representatives on site.

We are excited to share that construction activities are in full swing with the focus on relocating services to new interim structures, to make way for the new hospital footprint. These activities follow a carefully designed staging plan that outlines the sequence of the redevelopment and coordinates the relocation of services to ensure a smooth and efficient process.

### New interim Intensive Care Unit (ICU)

To ensure construction progresses smoothly, a state-of-the-art interim ICU is being built, to allow the hospital to continue to deliver high quality care while the redevelopment is underway. The facility is expected to be completed by mid-2025.

The concrete slabs for the interim ICU have been completed and internal works are progressing, including partition framing and high-level service installations. In the coming weeks, the focus will shift to installing the external façade and glazing.

This interim ICU will play a crucial role in maintaining uninterrupted critical care while the redevelopment takes place.



AERIAL VIEW OF CONSTRUCTION OF THE INTERIM ICU

## New interim kitchen

To make best use of space on site, the project team is building a kitchen on the roof of the Graythwaite Rehabilitation Centre for use by the hospital while the redevelopment is underway.



Works continue to progress with the walls and roof being installed, and essential services like wiring and plumbing to be added in the coming weeks.



## Trigg House

Refurbishment works to transform Trigg House into a new interim surgical ward have been completed, marking an important step for the project. During a recent site visit, the project's Consumer Reference Group (CRG) was impressed by the standard applied to the interim facilities.

## Consumer Reference Group site tour

On Wednesday 16 October, members from the Ryde Hospital Redevelopment's CRG joined the project team to view the recent construction progress. For almost three years the CRG has played an integral role in shaping the future of the hospital, while fostering a valuable connection between the community and the project team.

During the visit, the group toured the hospital grounds with members of the Integrated Project Team, visiting several key areas, including the interim kitchen, the interim Intensive Care Unit, and the newly refurbished Trigg House.

"The site inspection was a real benefit to the Ryde Hospital Redevelopment Consumer Reference Group," said Warren Smith, Consumer Reference Group member.

"It highlighted the significance of the interim structures as part of the build for the new hospital. It provided reassurance to the community as construction is undertaken over the next couple of years."

With construction now well underway, the valuable contributions of former patients, community members and consumers are helping to ensure that the new Ryde



Hospital building will meet the needs of future staff and patients into the future.

Their insights will continue to help inform important aspects of the project, including wayfinding and signage, furniture selection and the arts strategy.



MEMBERS OF THE A W EDWARDS CONSTRUCTION TEAM AT THE RECENT SOD TURNING EVENT

## Meet the builder

### A W Edwards

In January 2024, A W Edwards was appointed as the main works contractor for the Ryde Hospital Redevelopment.

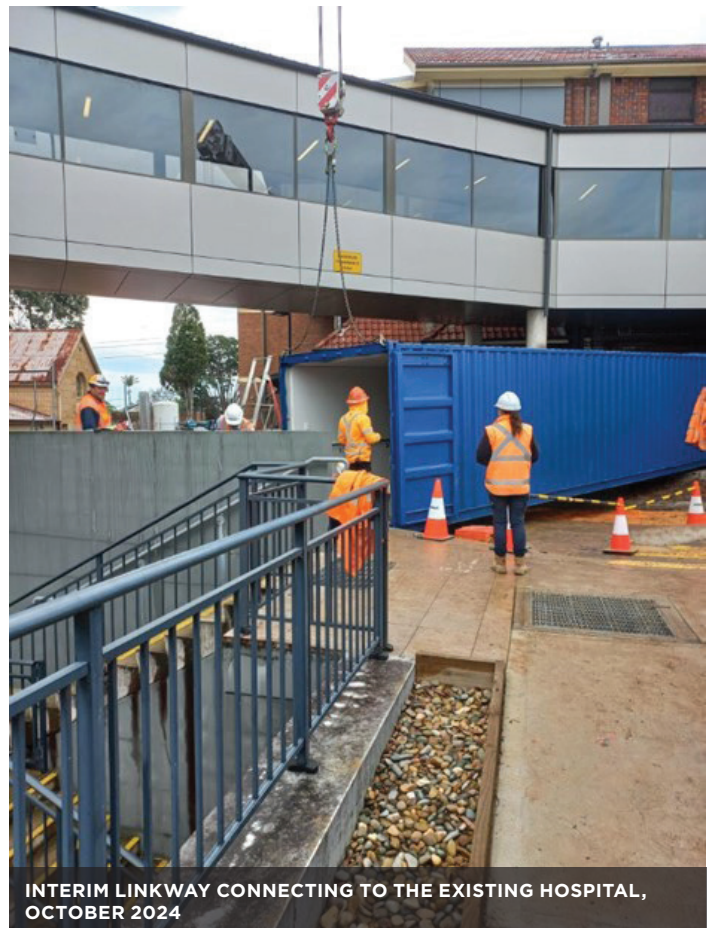
Leading the team is Project Director Robert Vranjesevic, who brings extensive knowledge and experience in delivering State Significant hospital redevelopment projects.

His expertise in healthcare delivery and community-based services will be key to the successful delivery of the Ryde Hospital Redevelopment.

“The A W Edwards team is passionate about creating lasting spaces that will benefit the community for generations to come,” Rob said.

“We are committed to working closely with residents throughout the redevelopment journey, guided by our commitment for quality, innovation and meaningful community engagement.”

The new hospital building is scheduled for completion in 2027, with the new main entry, demolition of former buildings and landscaping to take place in 2028.



INTERIM LINKWAY CONNECTING TO THE EXISTING HOSPITAL, OCTOBER 2024

## Video series: from a staff perspective

The project team caught up with Dr Peter Roberts, Director of Emergency at Ryde Hospital, who has worked at the hospital since 2001. He expressed his enthusiasm for the upcoming changes to the Emergency Department as part of the redevelopment.

Dr Roberts highlighted what these upgrades will mean for staff and the local community.

“The biggest difference will be the space and how everything functions in a modern environment. It will dramatically improve the experience for patients and staff alike,” he said. “A new facility is a great advantage, and something people can truly be proud of.”

The new Emergency Department will be significantly larger and purpose-built to meet individual patient needs. It will feature dedicated spaces, such as a paediatric area, ensuring that children and adolescents will not have to pass through adult treatment zones. This thoughtful design will create a more appropriate and comforting environment for everyone receiving care.

Dr Roberts also emphasised the positive impact the new facility will have on the hospital community.

“We are all looking forward to showcasing this much needed upgrade when it opens,” he added.



**Scan the QR code above to watch the latest video featuring Dr Roberts, where he discusses the exciting benefits of the soon-to-be redeveloped Emergency Department**



ARTIST'S IMPRESSION OF THE RYDE HOSPITAL REDEVELOPMENT WITH DENISTONE HOUSE IN THE FOREGROUND

### How can I find out more?

To subscribe to our project updates, email [rydehospitalredev@health.nsw.gov.au](mailto:rydehospitalredev@health.nsw.gov.au)

W: [rydehospitalredevelopment.health.nsw.gov.au](http://rydehospitalredevelopment.health.nsw.gov.au)

For an interpreter, call 131 450 and ask them to call (02) 9978 5411