

Fact Sheet

Ryde Hospital Redevelopment

April 2025

Construction

The NSW Government is investing \$526.8 million in the redevelopment of Ryde Hospital to meet the future health needs of the growing community.

A W Edwards has been engaged by Health Infrastructure to deliver the Ryde Hospital Redevelopment. This fact sheet outlines what construction activities will be undertaken, how the contractor and project team plan to manage and mitigate construction impacts, including noise, dust, vibration and the safe removal of any hazardous materials.

As we prepare for the construction of the Acute Services Building (ASB), we will be removing several buildings within the construction footprint.

These works will involve demolition and the removal of construction waste over the coming months. Once the site has been cleared, building works will commence.

Noise and vibration

To build the Ryde Hospital Acute Services Building, the building contractor needs to use machinery and equipment that may generate some noise and vibration.

We recognise that construction noise and vibration can be disruptive, especially in a live hospital environment and residential area. The project team is committed to reducing these impacts where possible. As part of these efforts, the team has developed a Construction Noise and Vibration Management Plan (CNVMP), which was developed in conjunction with staff, consumers and the community. The plan sets out the management strategy for the noise and vibration generated from construction.

The CNVMP is published on the Health Infrastructure website at hinfra.health.nsw.gov.au/projects/project-search/ryde-hospital-redevelopment

How we plan to reduce noise and vibration

Before starting construction, we undertook noise and vibration monitoring at different locations to understand background levels in and around the hospital campus.

We will continue to monitor sound, dust and vibration levels in real time before and during works to assess the impact to surrounding neighbours and implement further mitigation measures, as needed.

Where possible, we will reduce noise and vibrations impacts by:

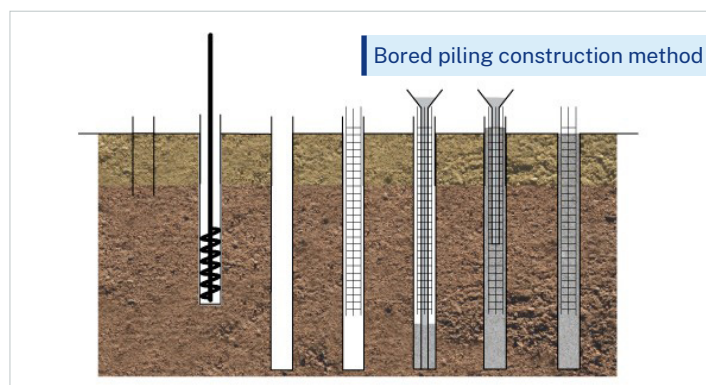
- Real-time monitoring of noise and vibration levels
- Applying appropriate respite during noisy activities
- Limiting the use of multiple plant and equipment at the same time and location
- Using non-tonal reversing beepers on plant, equipment and heavy vehicles
- Turning off plant and equipment when not in use
- Providing advance notification of noisy activities
- Maintain a buffer zone between work areas and surrounding neighbours
- Use temporary noise mounds, barriers and enclosures
- Limiting the duration of noisy work, including completing this work during standard construction hours of 7am to 6pm Monday to Friday and 8am to 1pm on Saturdays.

Piling and excavation

To support construction of the Acute Services Building, piling is required to build solid concrete foundations.

Piles are constructed by drilling into the ground and filling the hole with steel and concrete, using a bored piling method.

This type of piling generates less noise and vibration than other types of piling, minimising impacts to the hospital and surrounding neighbours.



Cranes

During construction of the new Acute Services Building, two tower cranes will be used on site. These two cranes will remain inside the construction site compound and will allow materials to be efficiently and safely lifted over a large portion of the construction site.

The two cranes are proposed to be in operation for approximately 18 months from mid-late 2025. Both cranes are electric and have been selected to reduce noise and reduce the project's carbon footprint. This has been achieved by eliminating the need to operate diesel power cranes, which use fossil fuels and emit noise and fumes.



Construction hours

Proposed site hours are Monday to Friday, 7.00am – 6.00pm, Saturday, 8.00am – 1.00pm. No Sunday work unless prior approval is granted

Truck movements will be reduced during peak traffic periods to minimise impacts to local roads.

Dust Management

Reducing dust caused by construction is a key focus for the Ryde Hospital Redevelopment project.

A broad range of dust mitigation measures are implemented on site, depending on the nature of the work that is being carried out. These include:

- Daily air monitoring and real time tracking during construction
- Changing the activities that take place during high winds and poor weather conditions
- Compacting and sealing of the site to prevent dust particles from becoming airborne
- Covering truck loads and stockpiles
- The use of road sweepers to collect dust and dirt
- The use of hand-held water sprays, water spray fans and water carts.

Hazardous materials

The controlled identification, assessment, containment, removal and disposal of hazardous materials is a priority for the Ryde Hospital Redevelopment. Due to the age of the hospital site and existing infrastructure, some hazardous materials (such as [asbestos containing material](#), lead paint/dust and contaminated fill) are expected to exist in buildings and upper ground fill.

Site-specific methodology for the safe management of hazardous material will be implemented including air monitoring during demolition, site clearance and excavation works. All hazardous material identified will be removed by licenced contractors in accordance with legislative requirements and associated industry codes of practice.

The project is committed to ensuring safe removal of hazardous materials for residents, patients and carers, staff, workers and the community.

Read our [asbestos containing material fact sheet here](#).



Scan the QR to sign up for email updates, or for the latest news visit: rydehospitalredevelopment.nsw.gov.au

For more information

T: 02 9978 5411

E: rydehospitalredev@health.nsw.gov.au

W: rydehospitalredevelopment.health.nsw.gov.au



For an interpreter, call 131 450 and ask them to call 02 9978 5411